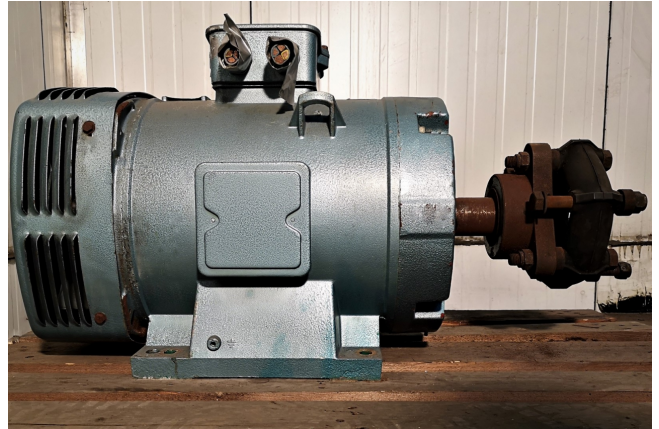


Leroy Somer P225 M-4

Specifications

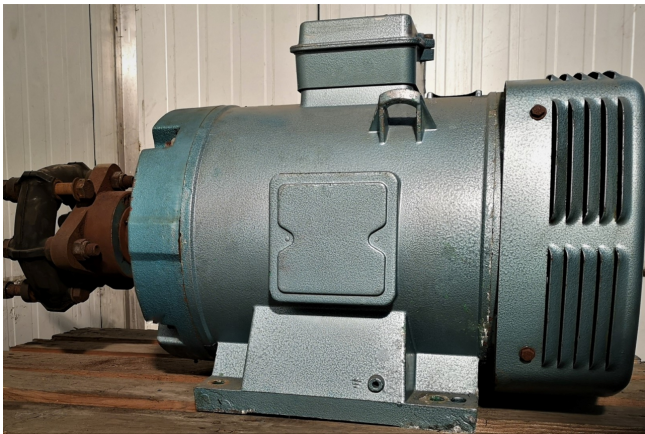
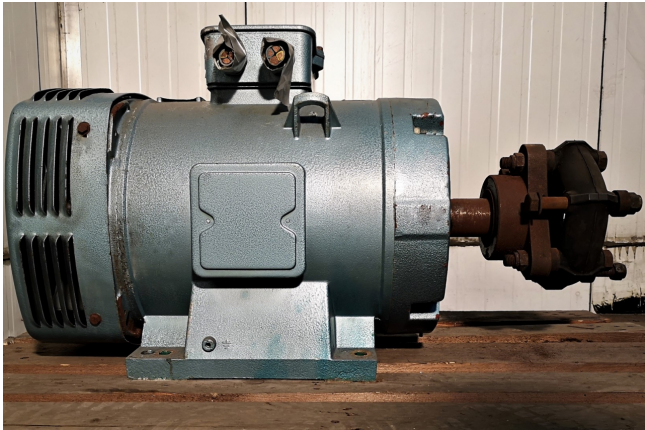
Merk	Leroy Somer
Type	P225 M-4
kW	55
RPM	1460
Size & Weight	920x400x540 mm (LxWxH)
50 Hz / 60 Hz	50 Hz
Stock	1



Description

Used Leroy Somer P225 M-4

Gebruikte Leroy Somer P225 M-4 elektromotor met 55 kW en 1460 RPM bij 50 Hz en 55 kW. Maten: 920x400x540 mm (LxBxH). Gewicht: 240 kg.



MOT ASYN		01/1990	
N°	112750/08	IP	23 50 Hz 3 φ
TYP	P 225 M-4	V	Δ380
Kw	55	A	109
RPM	1460	Id/in	5,1
S	S1	Cd/Cn	2,3
CL	F M 240 kg.	m	Cos φ 0,84
°C	40 Alt	dBA	η 91,5
J mt.	kg/m²		
CALDE	6314 CB	ES90	3800 h
COA	6214 CB	UNITER N.5	30 g
IDE		GRAISSE/GREASE	
Incl. les Roulements		NFC 51111.79 CEI 34.1	
PRESTIBLOC			
16015 Angoulême FRANCE			
MOTEURS LEROY - SOMER			